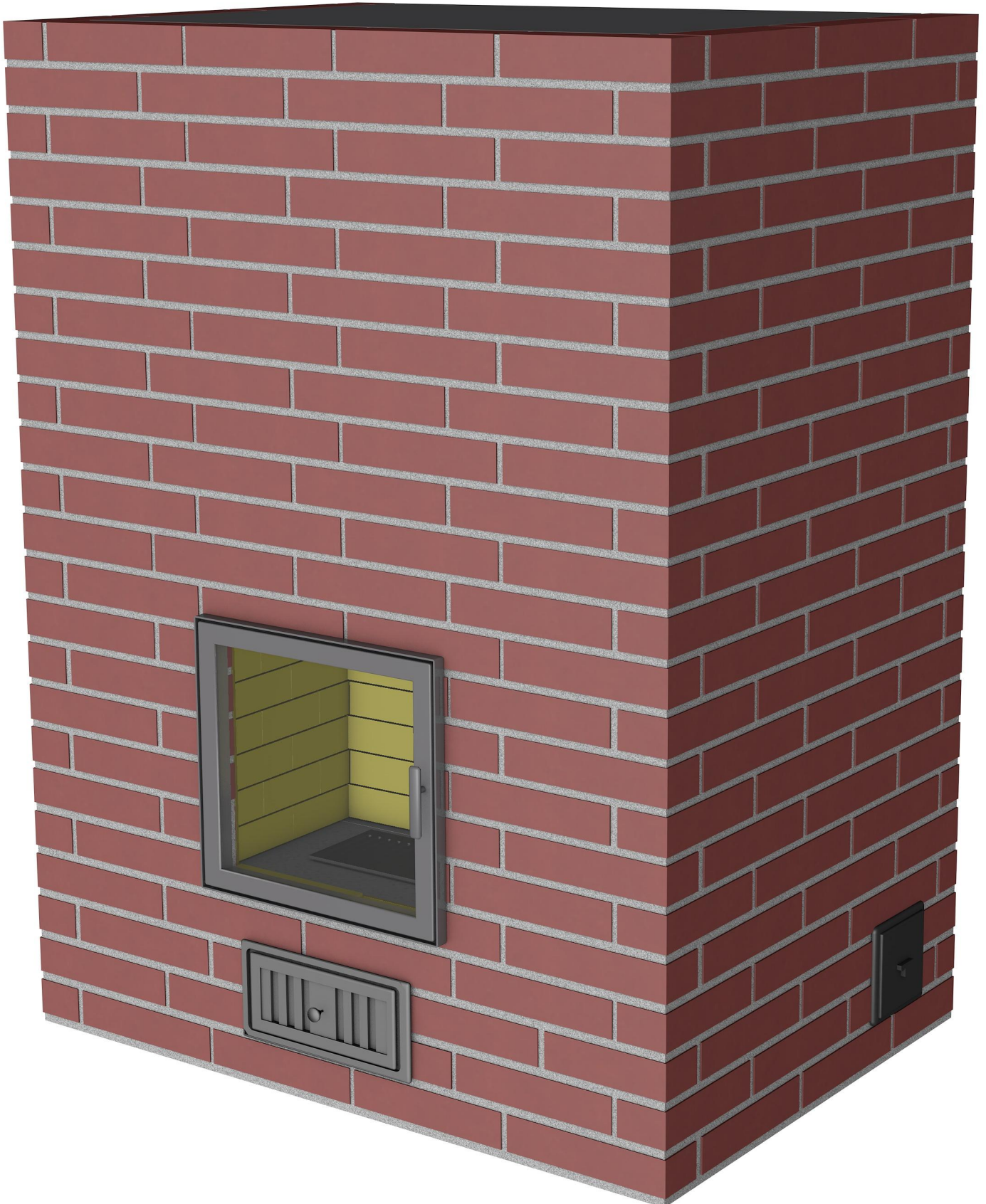
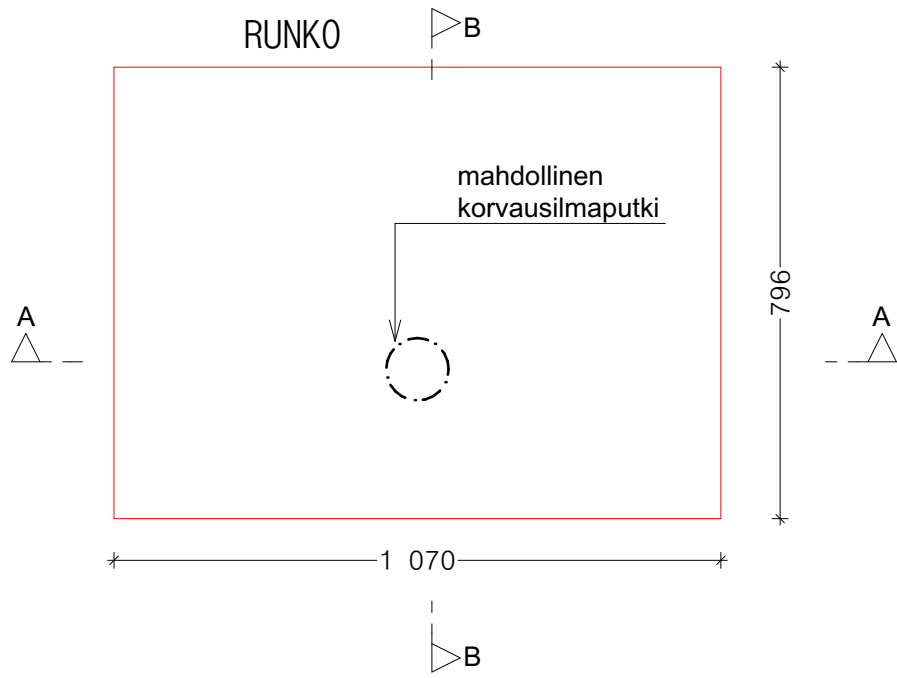


MATALA TAKKA 1200

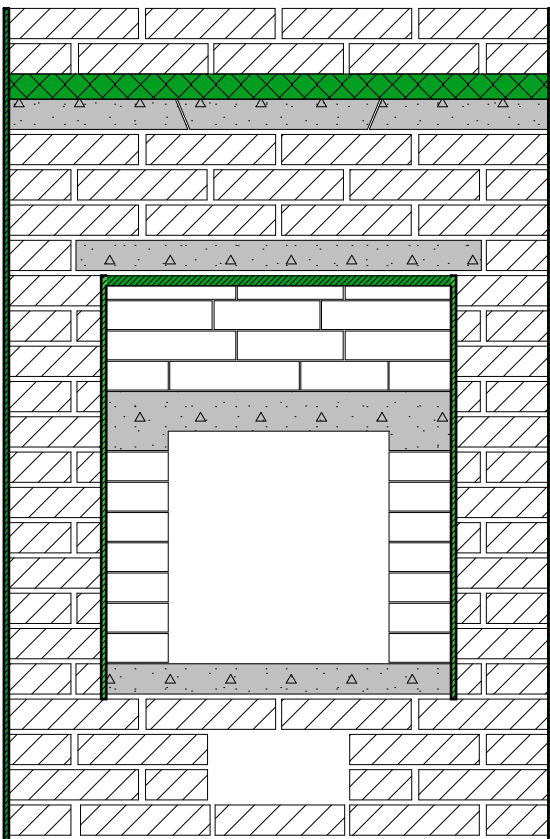


MATALA TAKKA 1200



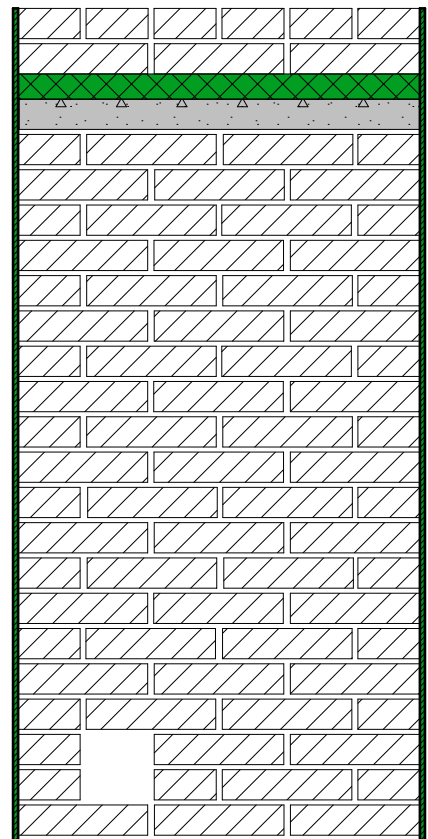
1:15

RUNKO EDESTÄ

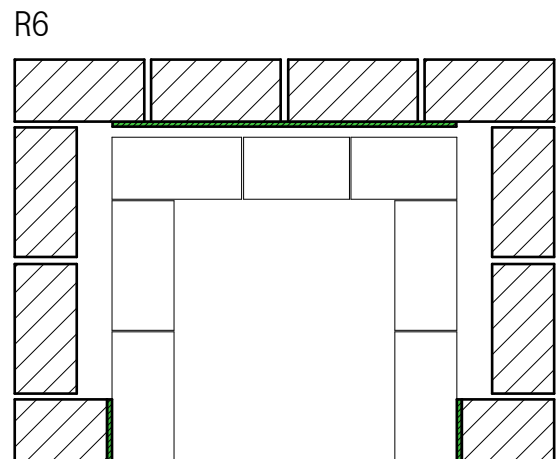
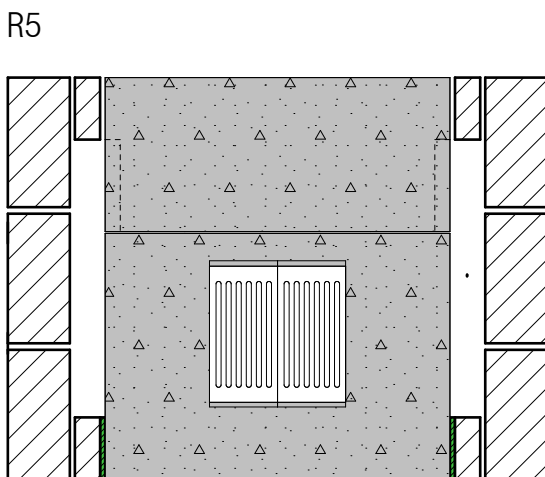
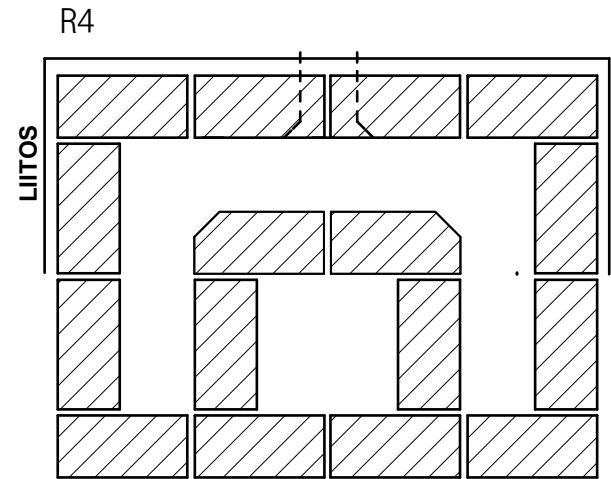
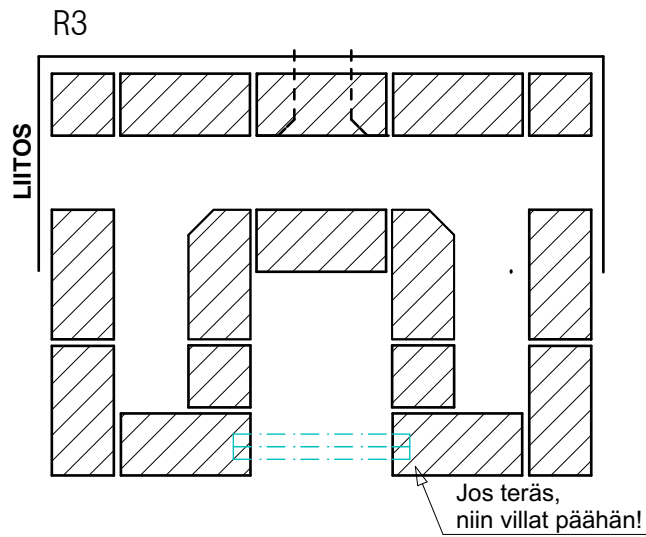
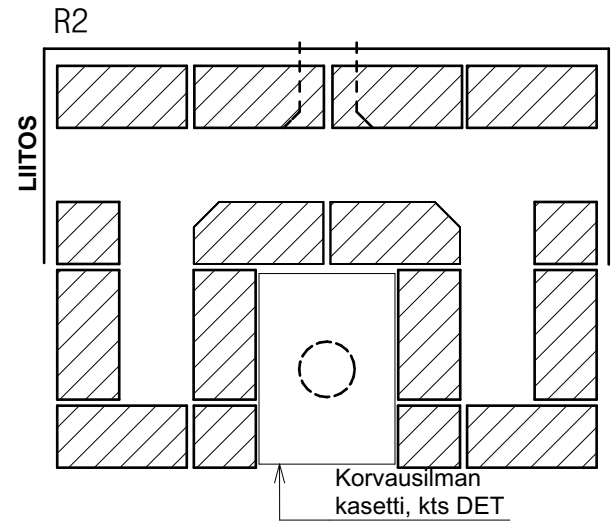
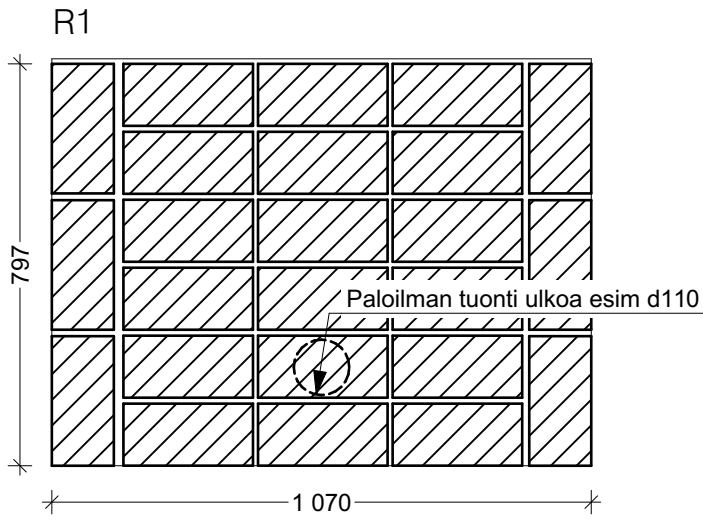


1:15

RUNKO EDESTÄ

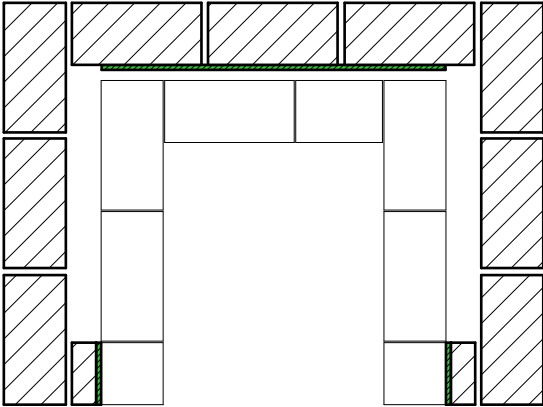


MATALA TAKKA 1200

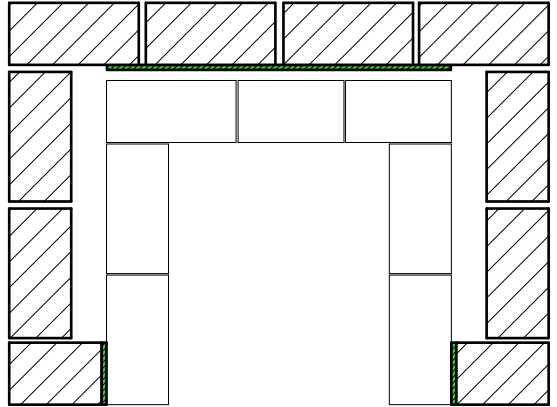


MATALA TAKKA 1200

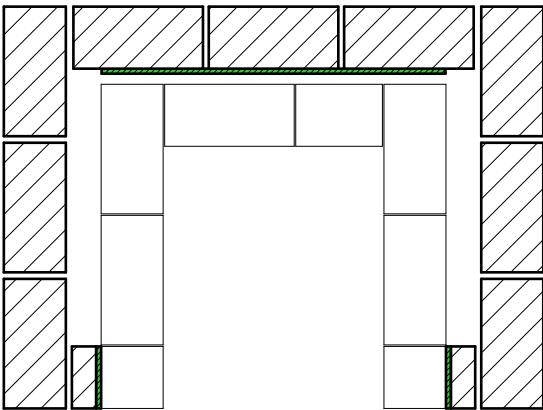
R7



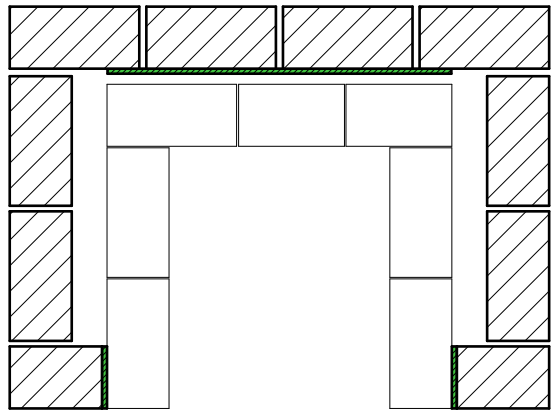
R8



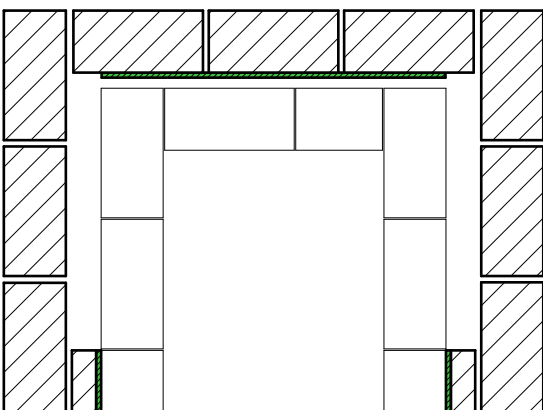
R 9



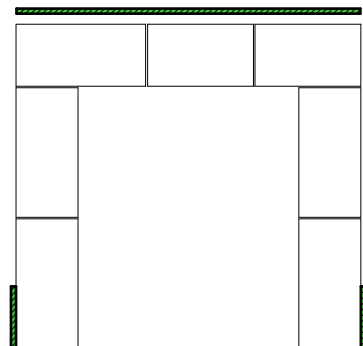
R 10



R 11

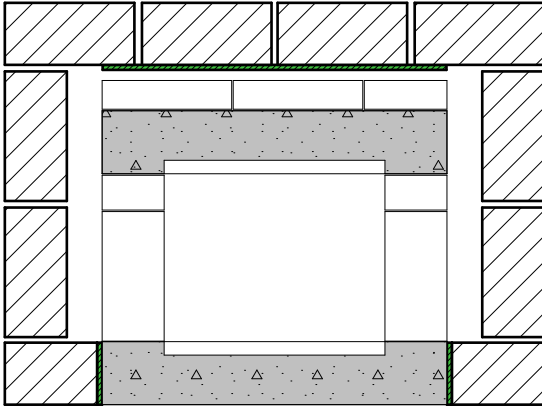


R 11 B

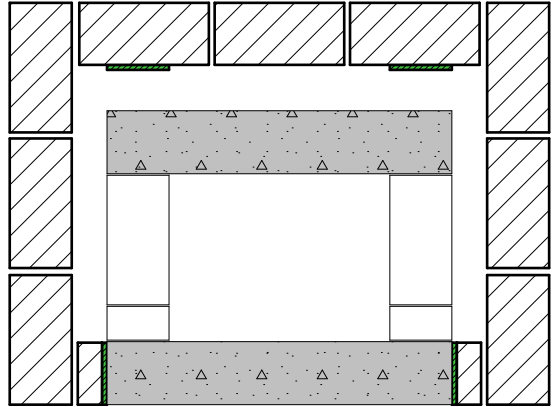


MATALA TAKKA 1200

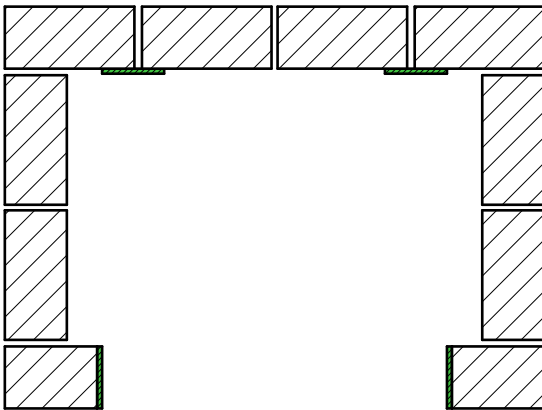
R 12



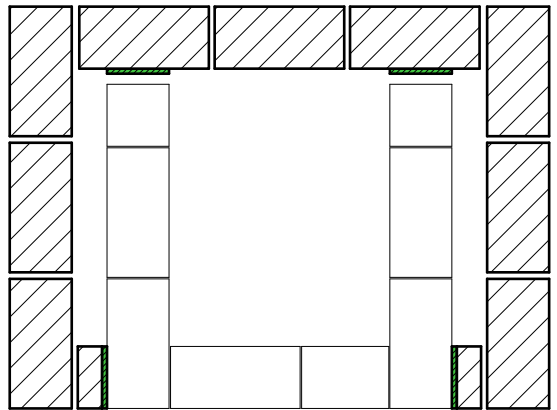
R 13



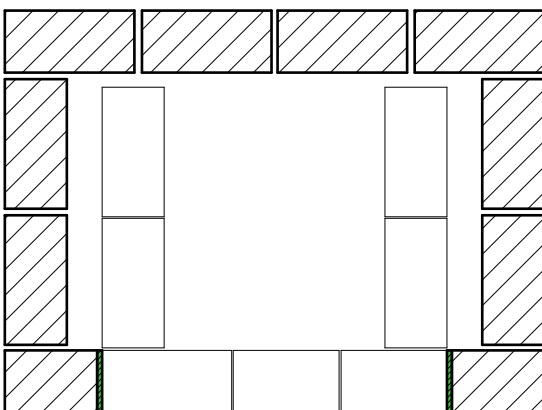
R 14



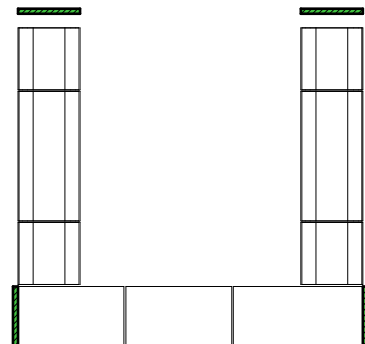
R 15



R16

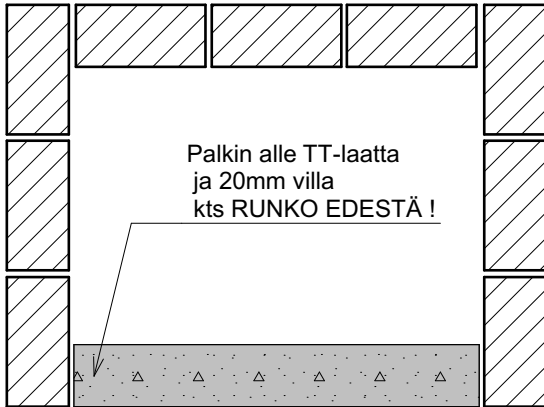


TASAUS

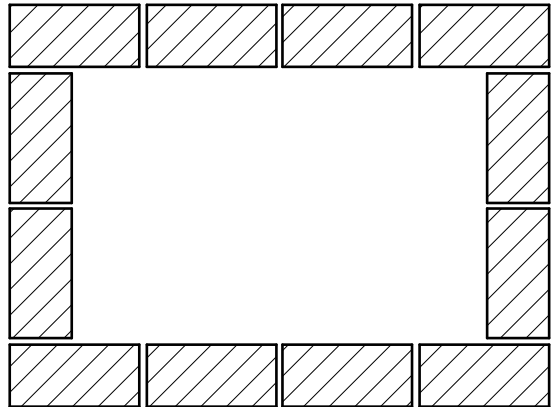


MATALA TAKKA 1200

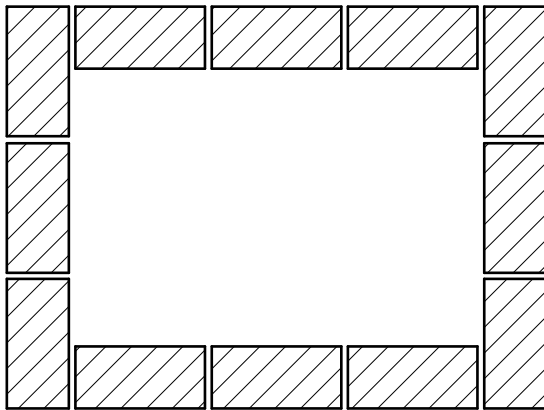
R 17



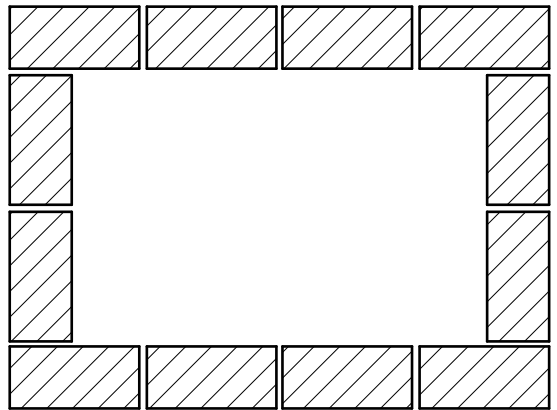
R 18



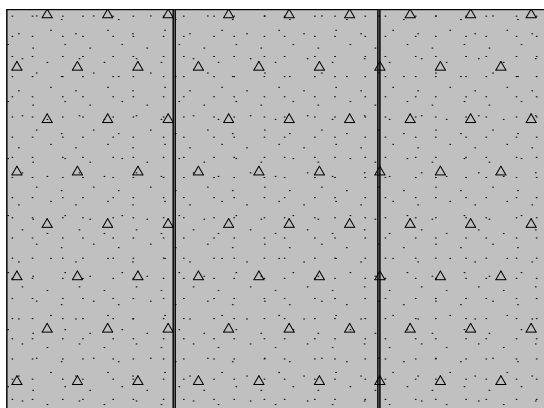
R 19



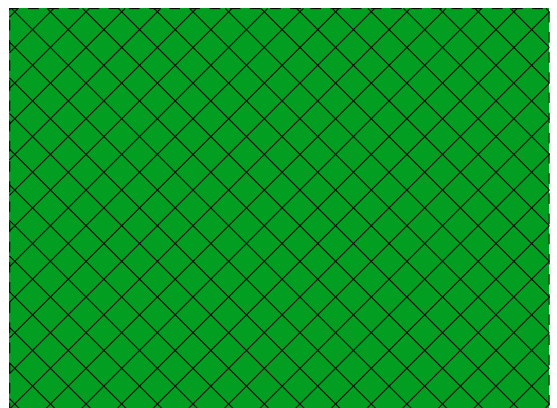
R 20



R 21

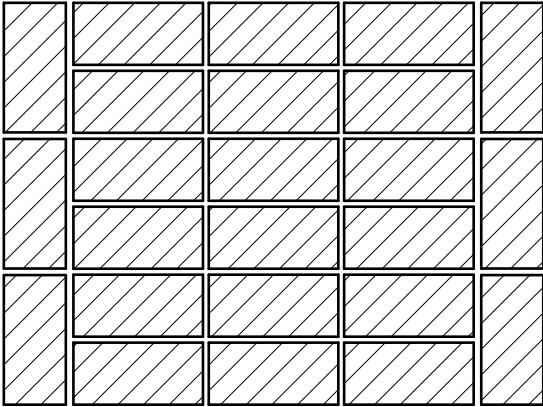


R 22

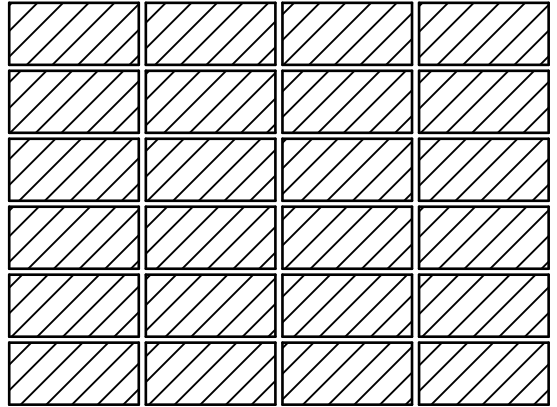


MATALA TAKKA 1200

R23



R24

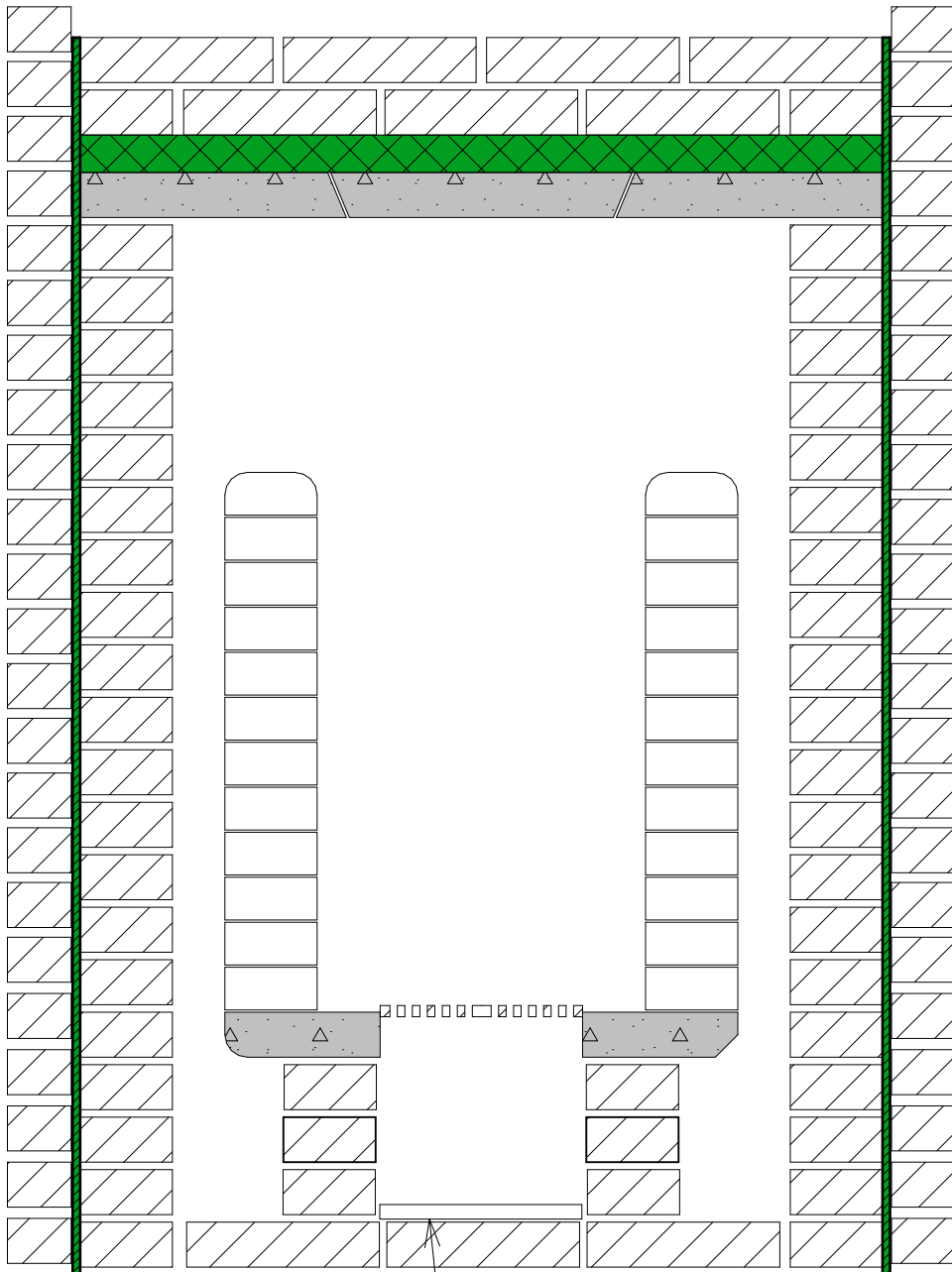


MATALA TAKKA 1200

A

Leikkaus

1:10



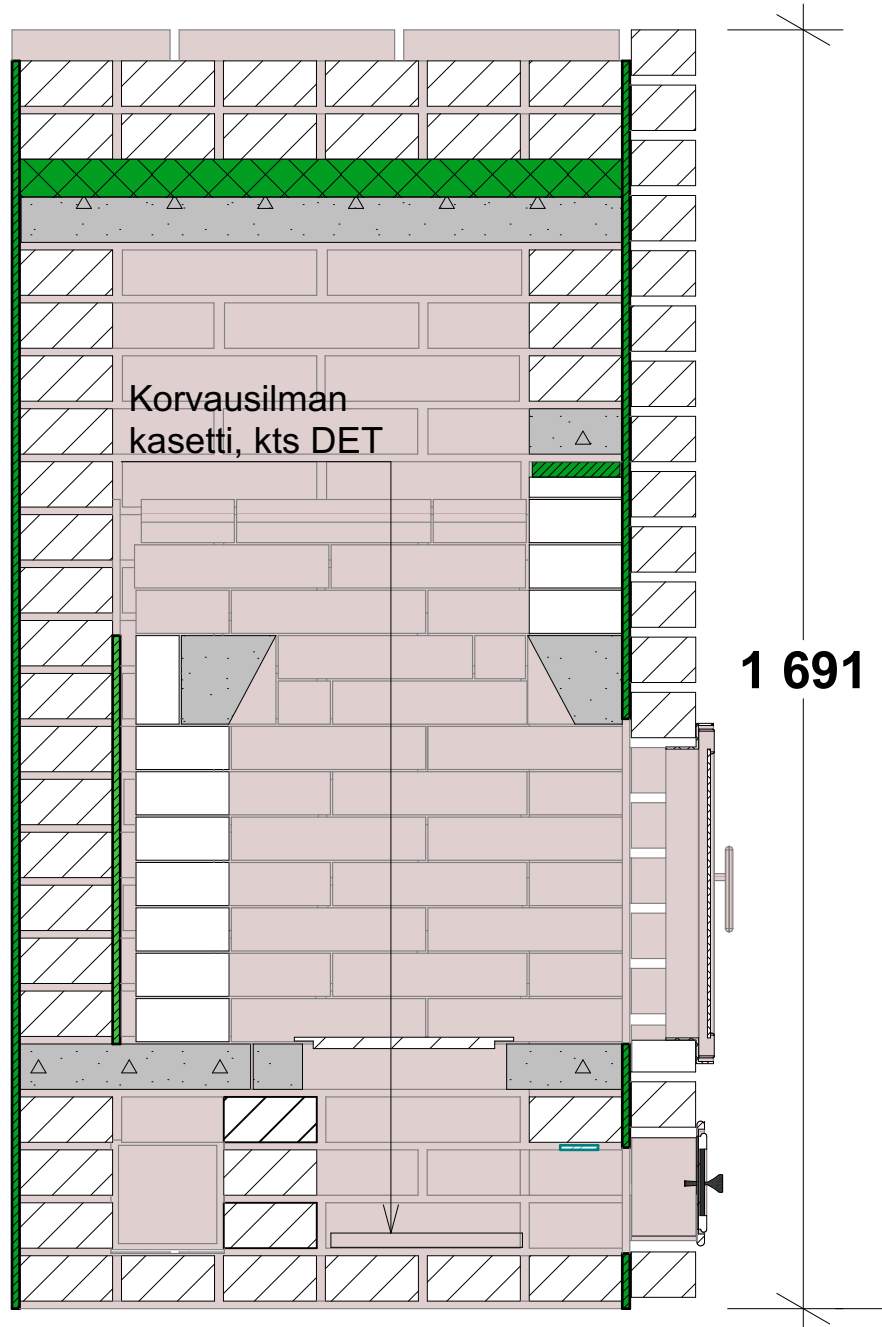
Korvausilman
kasetti, kts DET

MATALA TAKKA 1200

B

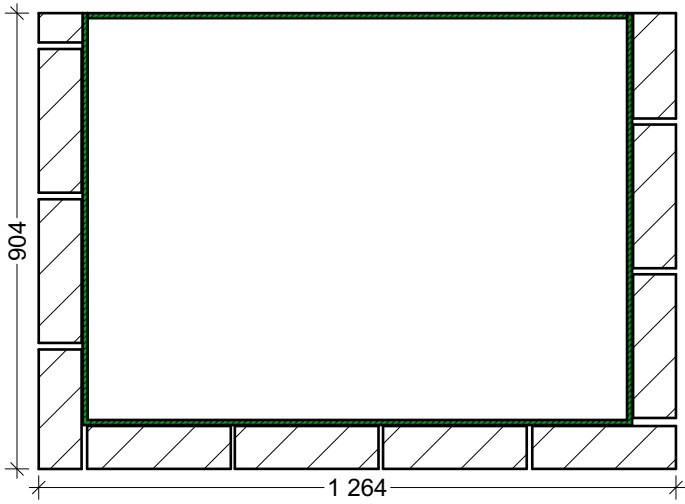
Leikkaus

1:10

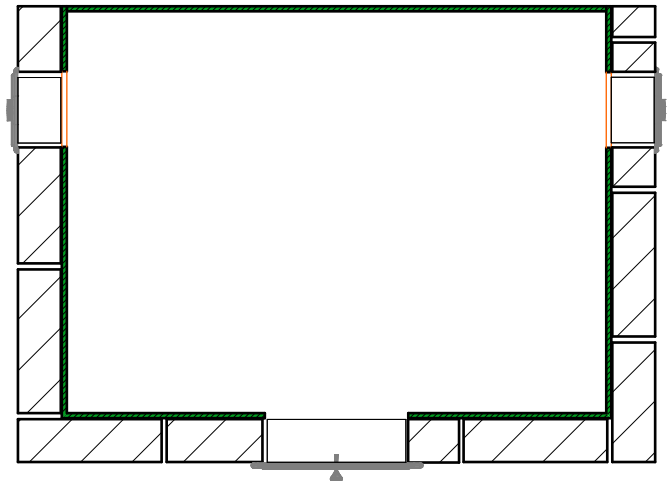


MATALA TAKKA 1200

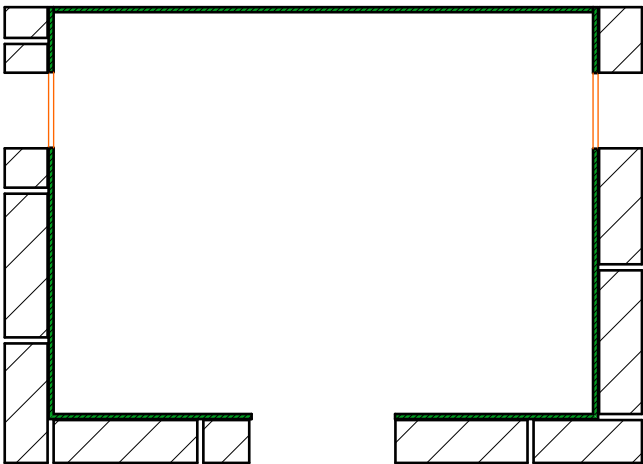
K 1,11,13,15,17,19,21,23



K 2



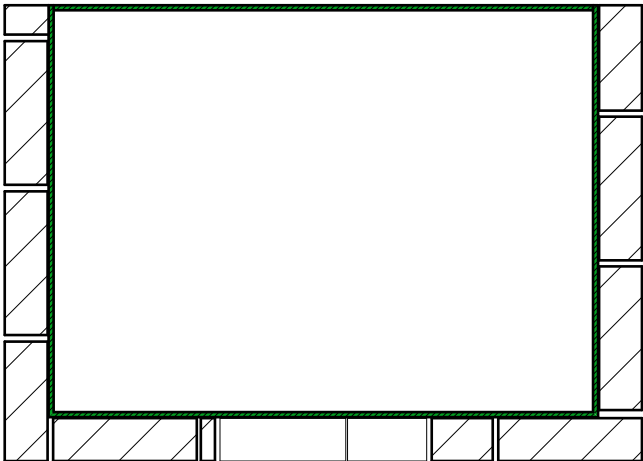
K 3



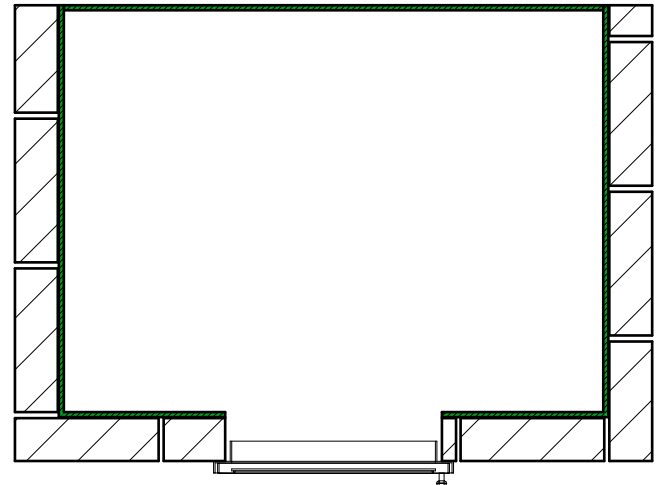
K 4



K 5

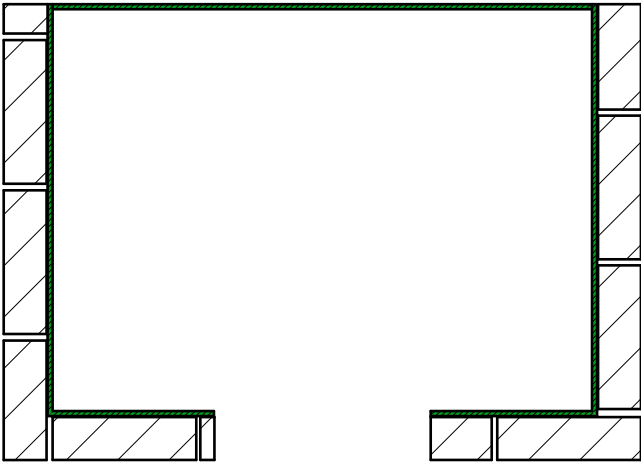


K 6,8,10

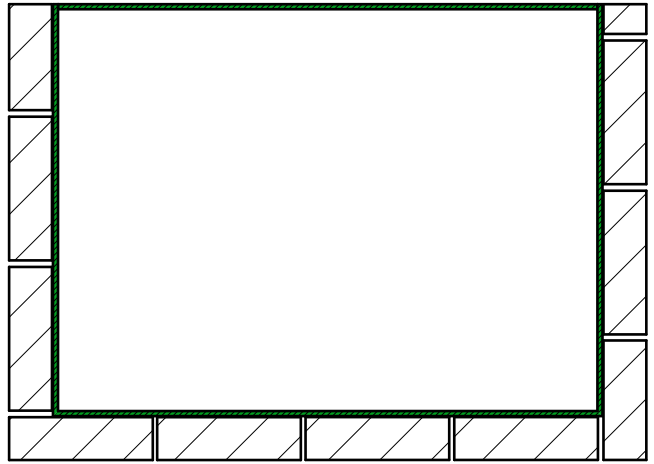


MATALA TAKKA 1200

K 7,9



K 12,14,16,20,22

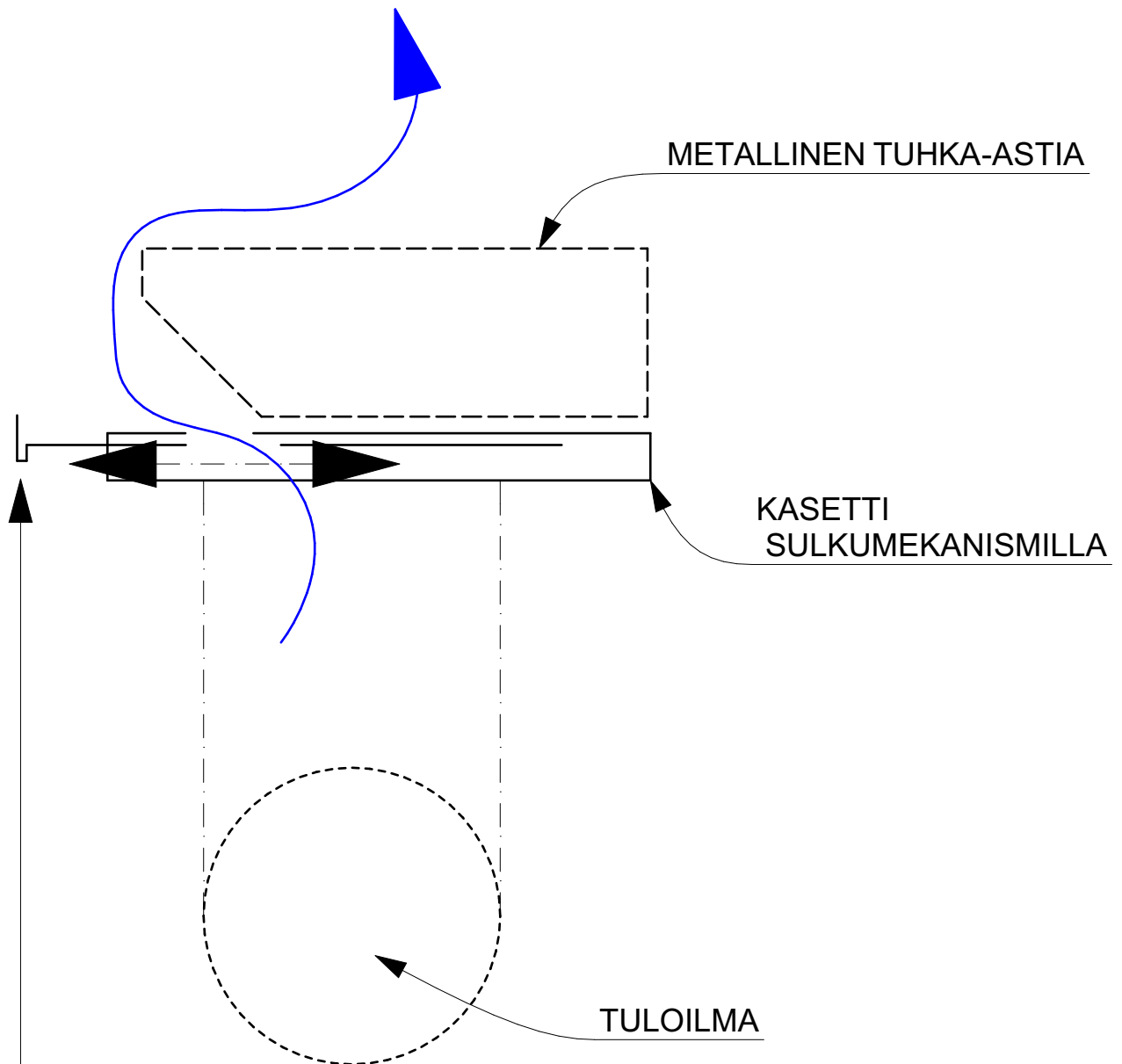


MATALA TAKKA 1200

MATALA TAKKA 1200 TARVIKELUETTELO		
Tarvikkeen ID	Määrä	H U O M
1B	2	
Aukko	4	REIKÄ
Latta	1	Tarvittaessa
MRT60	255	ML5 kpl*1,0 kg
MTT257	2	
NUL	2	Nuohousluukku
NUOHOSHOLKKI (T)	2	Vastaava muurausholkki
PAL 50	1	1 m2
PT257	290	Savilaasti kpl *1,0 kg
Suuluukku	1	
TTT257	74	Tulenkestävä ML kpl* 0,3 kg
TUHKALAATIKON HOLKKI (T)	1	Muurausholkki
TUL10	1	
TUL 10	2	
TUL 10	7	~7 m2 Tulisijalevy TUL 10
TUL RAUTA	1	270x130 Tuhkaluukun ovi
V1	1	
V2	1	Valuosat 1->
V3	2	Tulenkestävä VM 225 kg
V4	1	
V5	1	
V6	2	

MATALA TAKKA 1200

ILMANOTON OHJAUKSEN PERIAATEKUVA



Peitekasetissa esim. eteen/taakse
liuúttavissa ja suljettavissa
oleva sulkumekanismi